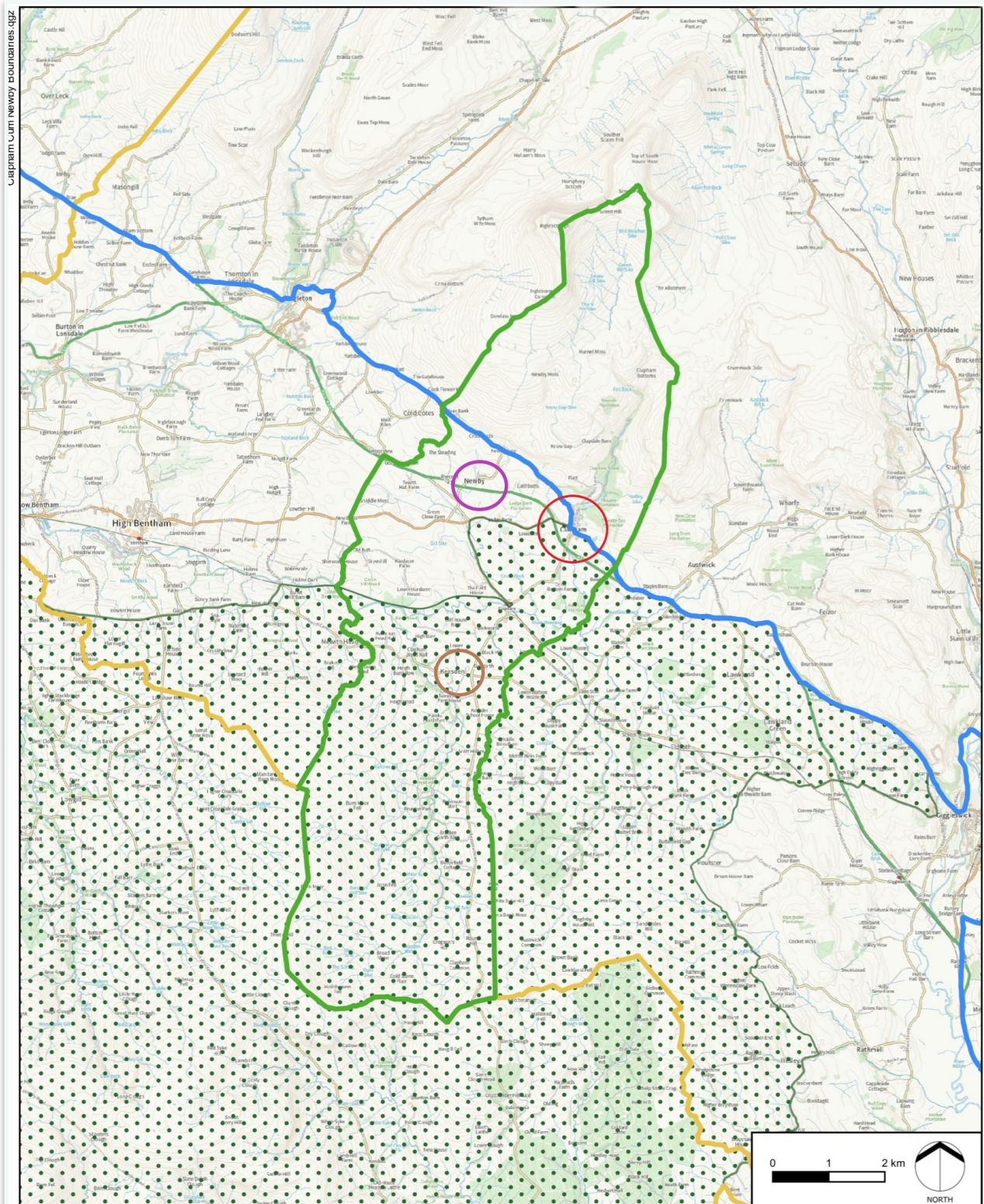


Table 1 - Conformity of NP policies to the NPPF

NP Policy Ref and Title	NPPF Para	Comment on conformity
Policy H1: Housing Mix	61	Our policy is in accordance with an HNA completed by AECOM. See Appendix 10
Policy H2: Affordable Housing Tenure Mix	63	Ditto
Policy BH1 Design Quality	128 & 129	See Design Guide Appendix 1
Policy BH2: Non-Designated Heritage Assets	194 - 197	The plan includes a comprehensive list of heritage assets which need to be considered prior to any development.
Policy NE1: Dark Skies	185c	This policy supports NPPF 185c which states: Policies should “limit the impact of light pollution from artificial light on local amenity, intrinsically dark landscapes and nature conservation.”
Policy NE2: Trees	174 and 180	This policy supports the NPPF in seeking to preserve trees as part of the landscape and as enhancing biodiversity
Policy EB1 Economic Growth	84a & b	The plan supports the NPPF policies for sustainable rural development whilst recognising the importance of maintaining biodiversity and heritage within this rural area.

NP Policy Ref and Title	NPPF Para	Comment on conformity
Policy CF1: Protection of Existing Community Facilities	93	This paragraph in the NPPF seeks to protect community facilities. The policy in the neighbourhood plan makes this specific to Clapham
Policy CF2: New, Enhanced and/or	92c & 93	The policy encourages the creation of new community assets which promote health and community interaction.
Policy CF3: Local Green Spaces	102 & 103	Support the designation and preservation of green spaces as outlined in the NPPF
Policy CI6: Communication Infrastructure	114	Clapham has a very poor mobile signal. The plan is anxious to correct this in line with NPPF goals outlined in the relevant paragraph
Policy ST1: Sustainable Transport	104 & 106	Cycling, rail and walking are all promoted in this policy.



Clapham cum Newby Designated Neighbourhood Area Plan Boundary

FIGURE 1

- Clapham
- Newby
- Keasden

KEY

- Forest of Bowland Area of Outstanding Natural Beauty (AONB)
- Parish and Neighbourhood Plan Area Boundary
- Craven District Council LPA
- Yorkshire Dales National Park LPA



STEPHENSON HALLIDAY

Planning, Landscape & Environment
an **RSK** company

Projected Coordinate System: British National Grid

DATE	BY	PAPER	SCALE	QA	REV
NOV 2022	MD	A4	1:90,000	DH	-

© Crown copyright. All rights reserved. 2022 License number 100020565 | Contains Ordnance Survey data © Crown copyright and database right 2022