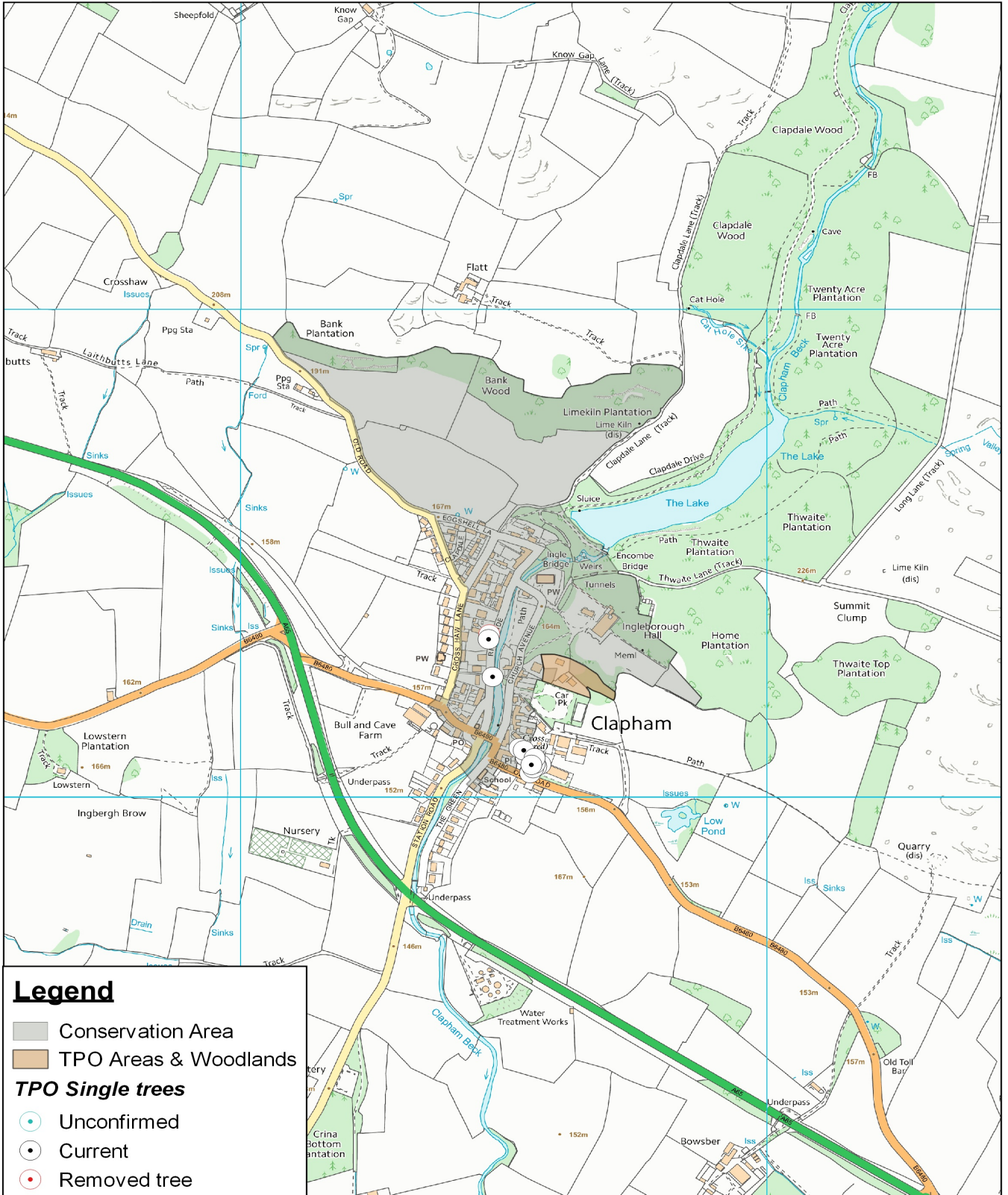


## Clapham Conservation Area & TPO's



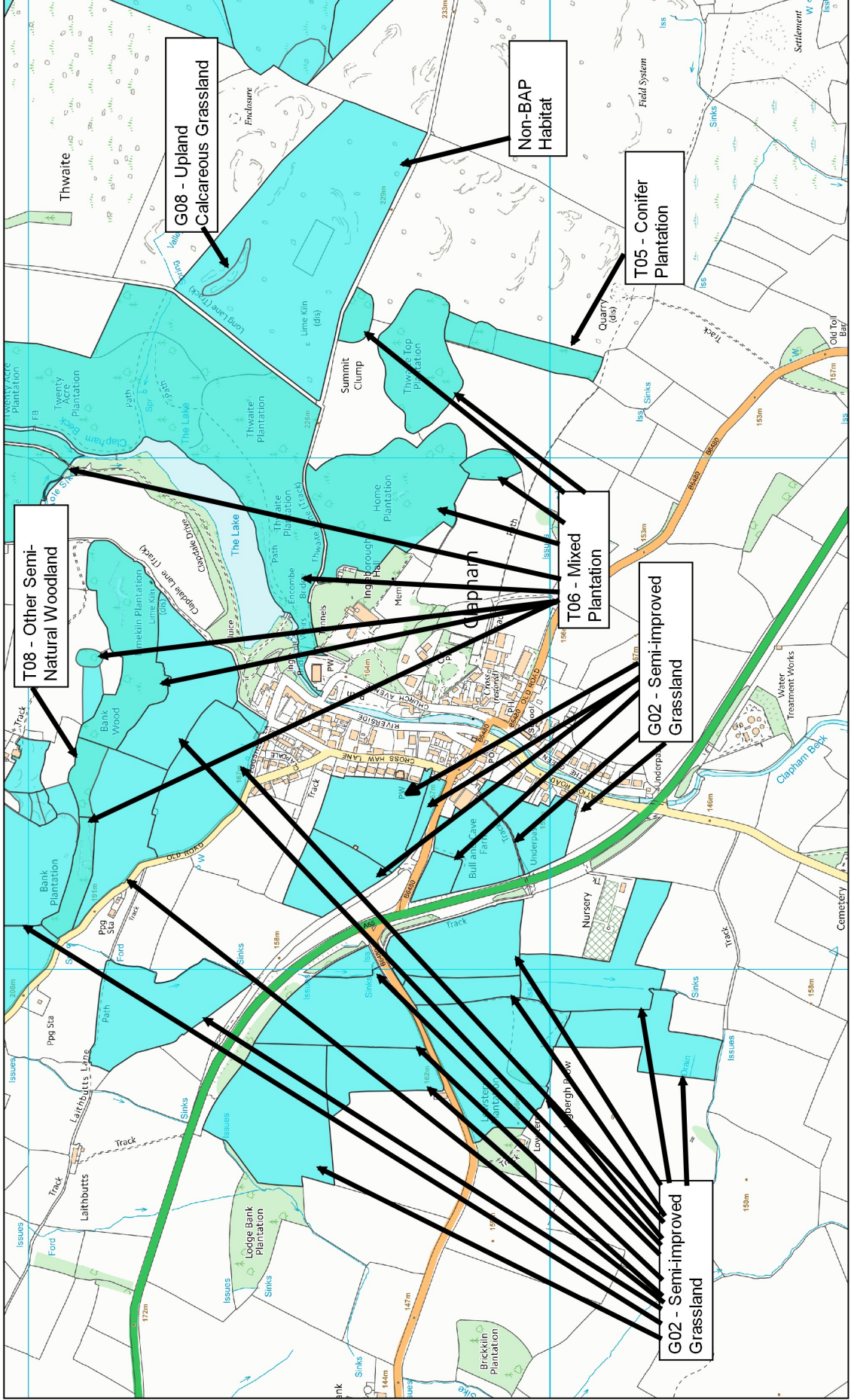
Scale 1:9,618



# Habitat Map

## Clapham - 700m

Scale 1:9,633



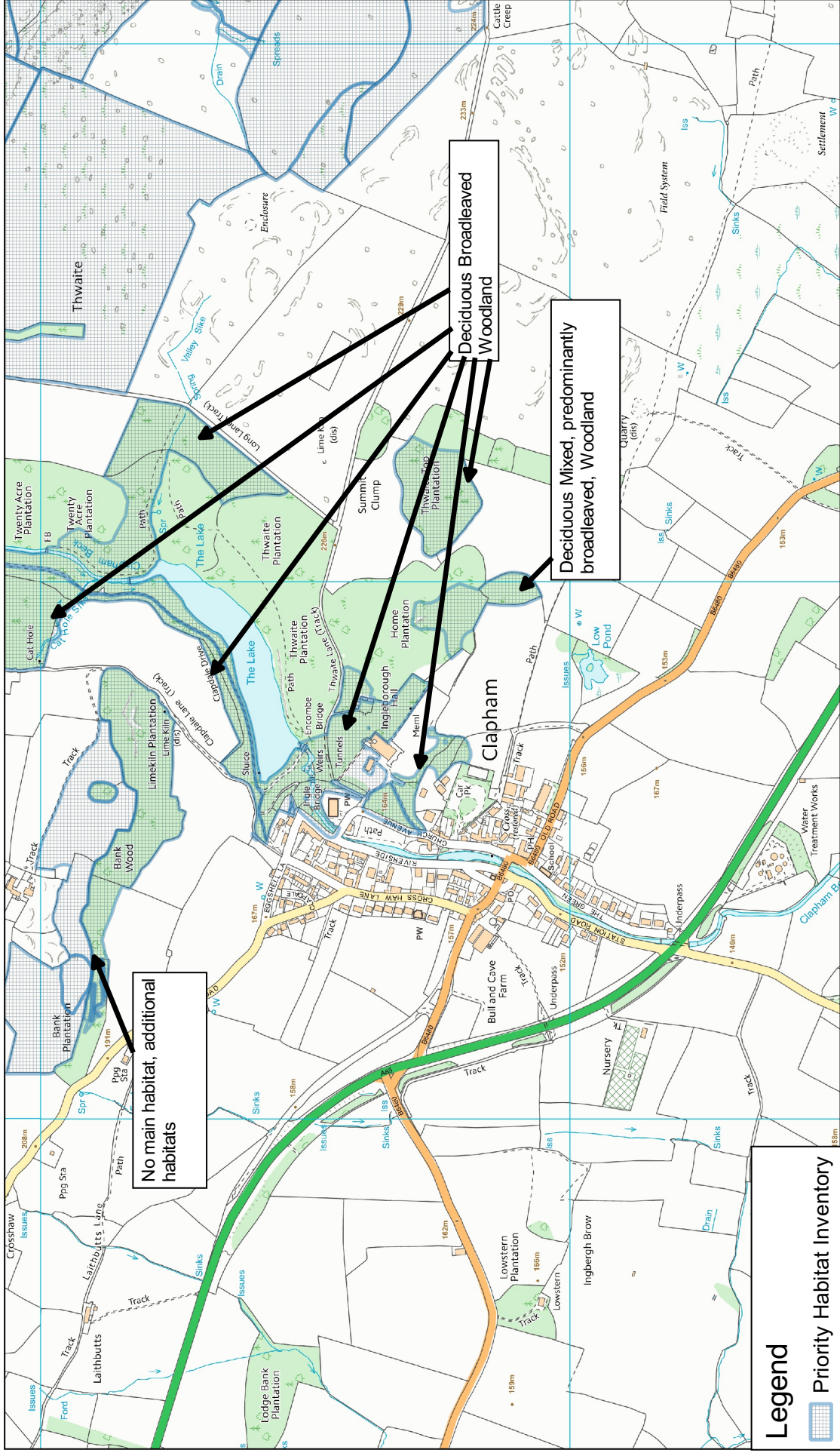


# Priority Habitat Inventory

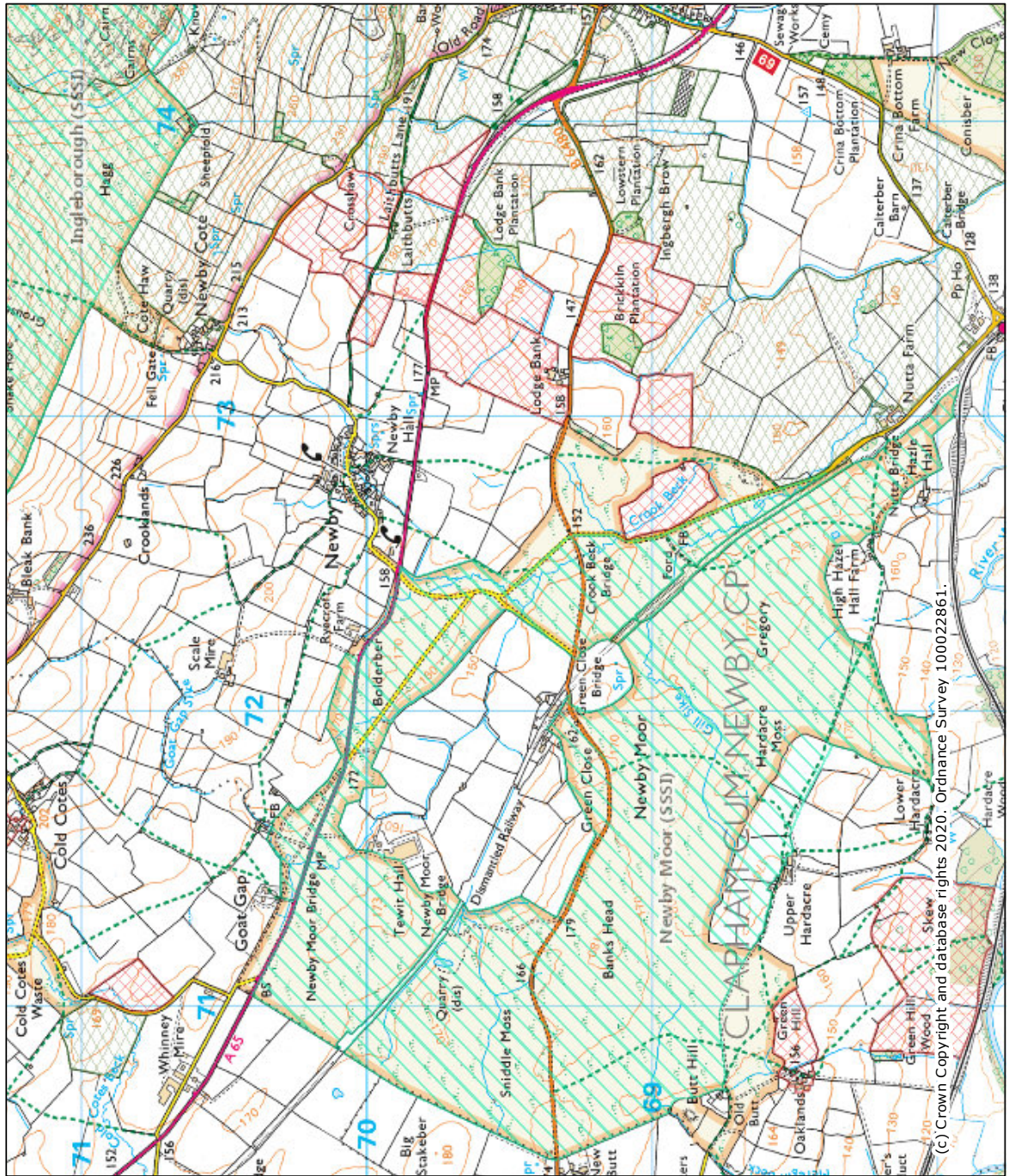
## Clapham- 700m radius



Scale 1:9,500







**Legend**

- Sites of Special Scientific Interest (England)
- Country Side Stewardship Agreement Management Areas (England)
- Country Side Stewardship (Middle Tier)
- Country Side Stewardship (Higher Tier)
- Country Side Stewardship - Arable Offer (Middle Tier)
- Feasibility Study and Historic Building Restoration
- Hedgerows and boundaries
- Implementation plan
- Woodland Creation Grant
- Tree Health Improvement
- Tree Health Restoration
- Woodland Management Plan

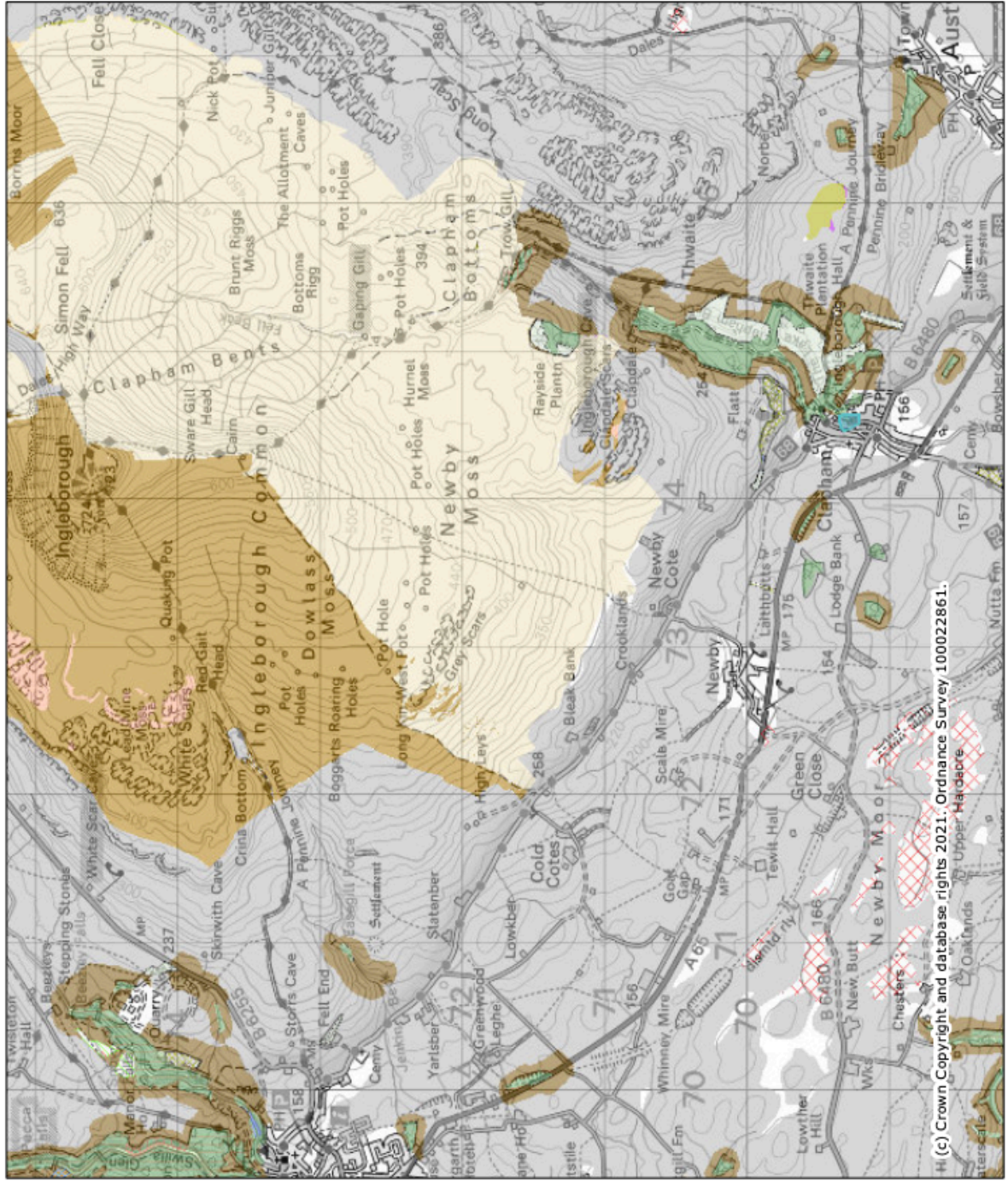
**Environmental Stewardship Agreements (England)**

- Entry Level plus Higher Level Stewardship
- Entry Level Stewardship
- Higher Level Stewardship
- Organic Entry Level Stewardship
- Organic Entry Level plus Higher Level Stewardship

Projection = OSGB36  
 xmin = 368800  
 ymin = 467500  
 xmax = 376000  
 ymax = 471600

Map produced by MAGiC on 5 November, 2020.  
 Copyright resides with the data suppliers and the map must not be reproduced without their permission. Some information in MAGiC is a snapshot of the information that is being maintained or continually updated by the originating organisation. Please refer to the metadata for details as information may be illustrative or representative rather than definitive at this stage.





**Legend**

- Woodland Priority Habitat Network (England)
- High Spatial Priority
- Lower Spatial Priority
- Priority Habitat Inventory - Calaminarian Grassland (England)
- Priority Habitat Inventory - Coastal and Floodplain Grazing Marsh (England)
- Priority Habitat Inventory - Good quality semi-improved grassland (Non Priority) (England)
- Priority Habitat Inventory - Grassland (England)
- Priority Habitat Inventory - Lowland Calcareous Grassland (England)
- Priority Habitat Inventory - Lowland Dry Acid Grassland (England)
- Priority Habitat Inventory - Lowland Meadows (England)
- Priority Habitat Inventory - Purple Moor Grass and Rush Pasture (England)
- Priority Habitat Inventory - Upland Calcareous Grassland (England)
- Priority Habitat Inventory - Upland Hay Meadows (England)
- Priority Habitat Inventory - Lowland Heathland (England)
- Priority Habitat Inventory - Mountain Heaths and Willow Scrub (England)
- Priority Habitat Inventory - Upland Heathland (England)
- Priority Habitat Inventory - Limestone Pavements (England)
- Priority Habitat Inventory - Blanket Bog (England)
- Priority Habitat Inventory - Lowland Fens (England)
- Priority Habitat Inventory - Lowland Raised Bog (England)
- Priority Habitat Inventory - Reebeds (England)

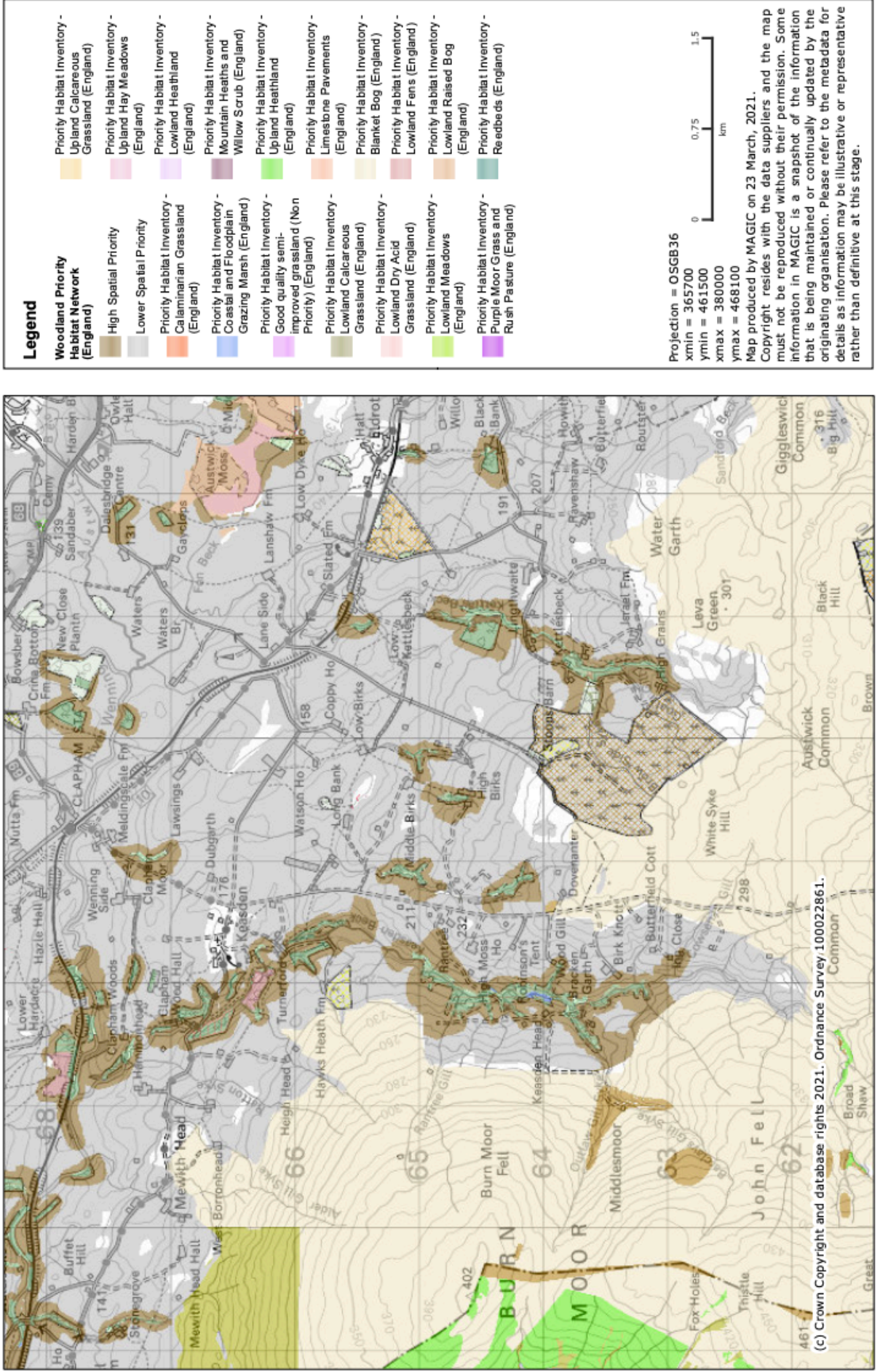
Projection = OSGB36  
 xmin = 366200  
 ymin = 468400  
 xmax = 380500  
 ymax = 475000



Map produced by MAGIC on 23 March, 2021.  
 Copyright resides with the data suppliers and the map must not be reproduced without their permission. Some information in MAGIC is a snapshot of the information that is being maintained or continually updated by the originating organisation. Please refer to the metadata for details as information may be illustrative or representative rather than definitive at this stage.

H (c) Crown Copyright and database rights 2021. Ordnance Survey 100022861.



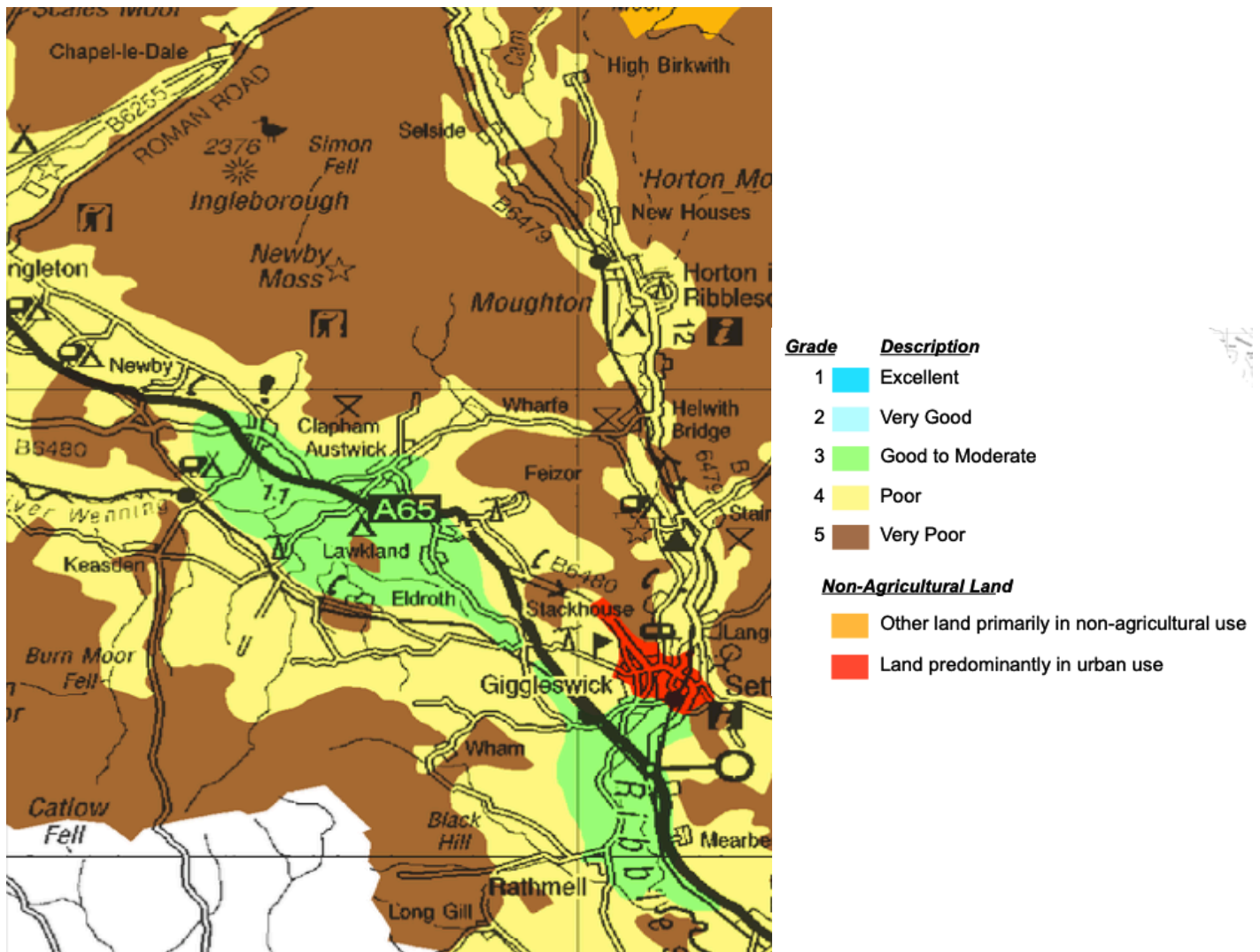


(c) Crown Copyright and database rights 2021. Ordnance Survey 100022861.



# Yorkshire & The Humber Region

## 1:250 000 Series Agricultural Land Classification



This map represents a generalised pattern of land classification grades and any enlargement of the scale of the map would be misleading. This map does not show subdivisions of Grade 3 which are normally mapped by more detailed survey work.

1:250 000 at A0

### Further information

Details of the system of grading can be found in: Agricultural Land Classification of England and Wales: revised guidelines and criteria for grading the quality of agricultural land. [www.defra.gov.uk](http://www.defra.gov.uk)

For further information about the availability of Agricultural Land Classification data, including more detailed local surveys, please contact the Natural England Enquiry Service on 0845 600 3078 or e-mail [enquiries@naturalengland.org.uk](mailto:enquiries@naturalengland.org.uk)